

# The Value of Care: Key Contributions of Migrant Domestic Workers to Economic Growth and Family Well-being in Asia

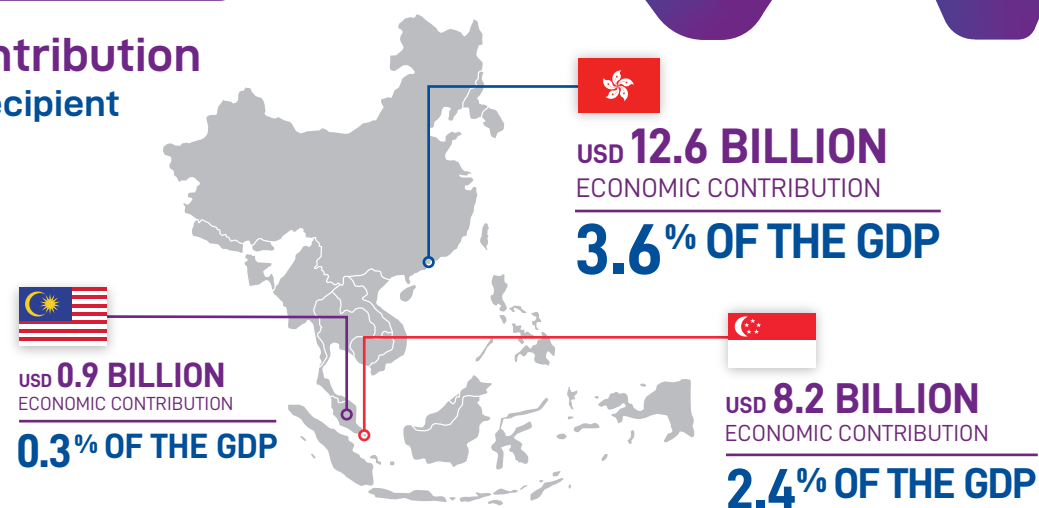


This International Women's Day, we celebrate **female Migrant Domestic Workers (MDWs)** and their contributions to Hong Kong's economic growth and family well-being. We also take a closer look at how financial education and inclusion can bring significant impact and facilitate more empowering experiences of migration.

## 1 ECONOMIC IMPACT

### Economic Contribution of MDWs to the recipient countries in 2018

According to Frost & Sullivan, the economic contribution of MDWs has been calculated to include absolute value (personal spending), real value of paid domestic work and value of freed-up time.



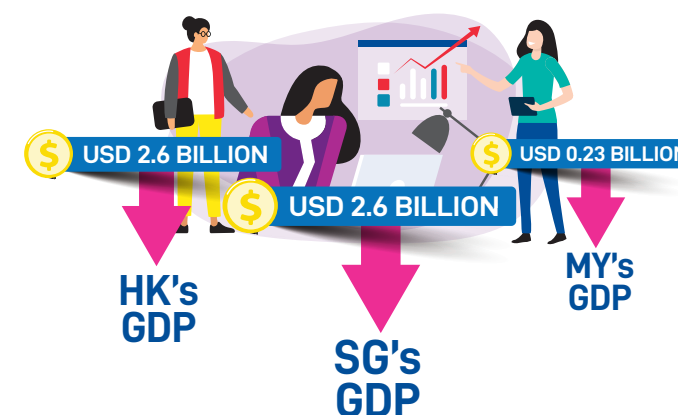
## 2 REAL VALUE OF PAID DOMESTIC WORK

### Economic contribution of migrant domestic workers to Hong Kong

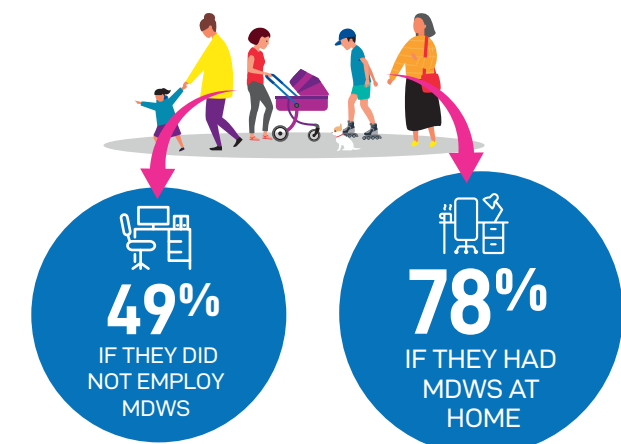
Activities	Number of hrs spent by MDWs per activity	Real cost of the activities (HKD per hr)	Yearly Real Value of Paid Domestic Work done by MDWs (HKD)
Cleaning	2.60	47	36,782.20
Cooking	1.72	80	41,417.60
Washing/Ironing	1.54	47	21,786.38
Shopping	1.11	60	20,046.60
Childcare	3.85	40	46,354.00
Elderly care	1.27	42	16,055.34
Pet care	0.21	40	2,528.40
<b>Total</b>	<b>12.29</b>		<b>184,970.52</b>
<b>Number of MDWs</b>			<b>385,000</b>
<b>Total Real Value of Paid Domestic Work per year</b>			<b>71,213,650,200</b>

## 3 INCREASED FEMALE LABOUR FORCE PARTICIPATION

MDWs allow many women to participate in the workforce, thus indirectly contributing to the recipient country's GDP.



Labour force participation rate for married women at prime working age of 25-54 with children:



## 4 VALUE OF CHILDCARE AND ELDERLY CARE

According to the projections from Labour Department of Hong Kong, out of 460,000 MDWs the country would need by 2030, **180,000** would be needed for taking care of the elderly.

% of MDWs who work with **Childcare**

71% HK
69% MY
57% SG

% of MDWs who work with **Elderly care**

50% SG
40% HK
34% MY

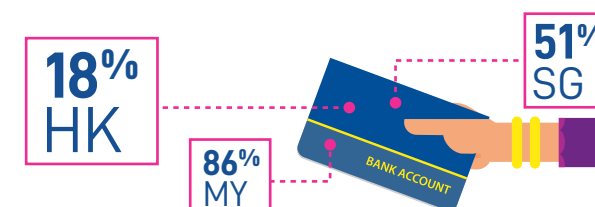


MDWs' cost to Hong Kong and Singapore households for childcare is **at least three times cheaper** than other alternatives such as childcare centres, kindergartens and private tutors.

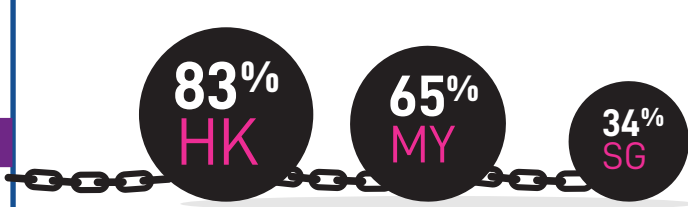
## 5 FINANCIAL INCLUSION

While majority of MDWs contribute a significant amount to the economy, it's interesting to note that **only 18%** of MDWs in Hong Kong have a bank account.

**Bank account ownership** of MDWs in the recipient countries



**High level of indebtedness** among MDWs



Scan QR to download full report

**#TheValueOfCare**